

Introduction by Ian Volner

# THE AMERICAN HOUSE

100 Contemporary Homes



Edited by Hannah Jenkins

images  
Publishing



A modern interpretation of the classic Hawaii summer camp, this warm and spacious home was designed with longevity in mind. Incorporating various timeless elements, which remain relevant to century-old architecture and design, the architects intended to create a home that would aesthetically stand the test of time.

In reference to traditional Hawaiian architecture, the home is made up of multiple communal hangout spots, allowing for interaction among residents and guests. Located at the base of the Big Island's large cinder cone, Pu'u Ku'ili, it offers expansive views of the Pacific Ocean and Kua Bay, as well as mountain views of Hualalai. The property was originally used for ranching and the owners felt compelled to return it to its natural state with the re-naturalization of a collapsed lava tube and bunch grasses. Furthermore, the buildings reinforce the camp-like aesthetic by utilizing simple, durable materials such as board-formed concrete, western red cedar, oversized sliding doors, operable wood ventilation louvers, and rope lashing.

The commodious and open backyard includes a large overhang of western red cedar, which shelters a tiki bar and cozy sitting area. This space, complete with multiple lounge chairs and breathtaking ocean views, spills over into the pool. A barbeque/luau area allows for gatherings of family and friends under the comfort and shade of a kiawe tree.

Walker Warner Architects

# KAHUA KUIILI







Marion Philpotts of Philpotts Interiors incorporated bright colors and retro elements, tying into the modern theme of the structure, while creating a vintage vibe. The expansive kitchen constructed in western red cedar includes a breakfast bar, dining table, and state-of-the-art appliances. Its tall ceiling, large windows, and grand sliding doors, which open to the backyard, are cohesive with the open and airy theme of the house. Intimate spaces for privacy are implemented throughout the home, including cozy reading nooks and relaxing sitting areas. It is the perfect place to unwind and enjoy the natural climate and landscape of Hawaii.





This Tiburon residence is a classic and inspiring abode that embodies the contemporary through its clean lines and modern design. Located on an east-facing bluff of the peninsula, this secluded, two-story home looks out onto San Francisco Bay. Designed to accommodate visiting friends and a multi-generational family environment, it offers a harmonious balance between private spaces for relaxing and public spaces for entertaining and communal activities.

The entire site was utilized to develop the feeling of a compound rather than a stand-alone building. In order to maximize the natural beauty and foliage surrounding the property, the architects implemented horizontal architecture, which integrates the home into the terraced landscape. Deep overhangs further minimize the structure's height and help elongate its horizontal shape, while asymmetrical window and door arrangements highlight the modern aspects of the residence and provide a rhythm underneath the unifying roof.

Walker Warner Architects

# PARADISE





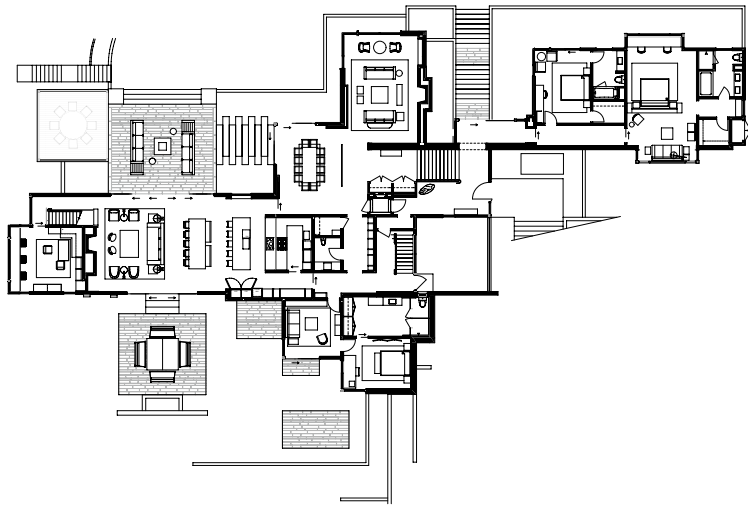




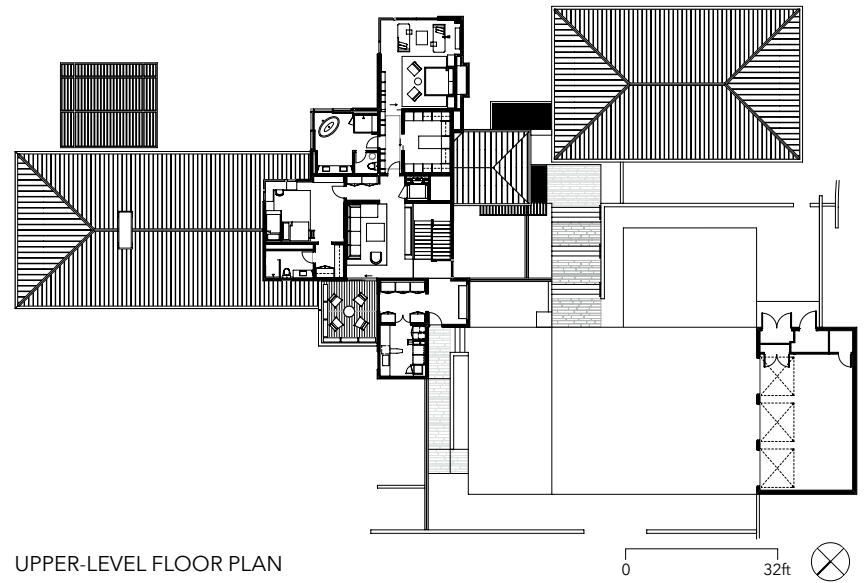
Although the property sits on a steep slope, the architects were able to create a gracious and inviting entry, as well as fluid indoor to outdoor connections from all main living spaces. The main entrance sits a half-level below the upper level and is complete with broad stairs, a sunken garden, and compelling red door. Unconventionally, this upper level includes an auto court and family entrance, while all living spaces expand across the ground floor and flow easily out to the pool and lawn.

The unique design of the residence derives from the clients' appreciation for art. Their tastes have been translated into bold architectural components, which convey the element of surprise throughout unexpected spaces. Interior designer, Nicole Hollis of NICOLEHOLLIS Interior Design, took cues from the clients' worldly sophistication, minimalist sensibilities, and the site's unique location to craft a wholly integrated and intensely personal interior environment, which connects seamlessly with the stunning architecture and landscape.





MAIN-LEVEL FLOOR PLAN



UPPER-LEVEL FLOOR PLAN

0 32ft

