

## Quintessa Winery

Rutherford, Calif.

Walker Warner Architects

An environmentally sensitive design combines efficiency with aesthetics

**Formal name of Project:**  
*Quintessa Winery*

**Location:**  
*Rutherford, Calif.*

**Gross square footage:**  
*Winery = 27,000 sq ft*  
*Winery caves = 15,000 sq ft*  
*Office Building = 4,800 sq ft*

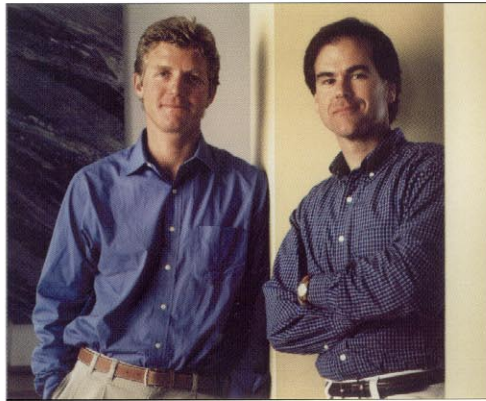
**Owner:**  
*Agustin and Valeria Huneeus*  
*Winery Manager: Grady Sibert*  
*www.quintessa.com*

**Architect:**  
*Walker Warner Architects*  
*835 Terry Francois Blvd., Suite B*  
*San Francisco, CA 94158*  
*General Phone: 415.318.8900*  
*Direct Phone,*  
*Greg Warner: 415.318.8908*  
*Fax: 415.626.6858*  
*www.walker-warner.com*

A combination of the owners' passion for winemaking and their respect for the environment inspired the winery at Quintessa. The project demonstrates how smart architectural design can efficiently facilitate the winemaking process.

The vineyard's 280 lush acres provided ample space for the winery, however, site selection was based on an analysis of many criteria. The most important issue was the need to minimize the impact of a large structure on the existing vineyards and surrounding landscape. Almost built into the hillside, the simple sculptural main building form reflects the natural grade of the landscape. While the exterior of the winery harmonizes with the countryside, the interiors are sleek and modern.

Aside from environmental concerns, the architects chose a site that would serve many functions. The location of the crescent-shaped building provides direct visual and vehicular access to the nearby public roadway. It also allows tractors to transport grapes to the roof terrace, where the grapes can then move through the fermentation process by gravity. Gravity flow is a key element in the design of Quintessa. The gravity flow of crushed grapes helps to ensure very high quality wine by minimizing the mechanical processing and pumping often used in typical wine production.



## the People

### Owner

Agustin and Valeria Huneus  
Winery Manager: Grady Sibert  
www.quintessa.com

### Architect

Walker Warner Architects  
835 Terry Francois Blvd., Suite B  
San Francisco, CA 94158  
General Phone: 415.318.8900  
Direct Phone,  
Greg Warner: 415.318.8908  
Fax: 415.626.6858  
www.walker-warner.com

### Principal-in-Charge:

Greg Warner

### Principal:

Brooks Walker

### Project Manager:

Kevin Killen

### Job Captain:

Pete Albertson

### Builder

Cello & Maudru Construction  
Napa, CA  
Bill Maudru

### Interior Designer

Stone Interiors  
Mill Valley, CA  
Stacy Stone

### Engineer(s)

**Structural:**  
ZFA Structural Engineers  
Santa Rosa, CA  
Gregory Zucco

### Mechanical:

Larkin & Associates  
Sebastopol, CA  
Paul Larkin

### Electrical:

Hansen & Slaughter  
San Rafael, CA  
Ray Slaughter

### Civil:

Riechers & Spence Associates  
Napa, CA  
Peter Riechers

### Consultant(s)

**Landscape Architect:**  
Lutsko Associates  
San Francisco, CA  
Ron Lutsko

### Lighting Designer:

Eric Johnson Lighting Design  
San Rafael, CA  
Eric Johnson

### Waterproofing Consultant:

Ferrari Moe, LLP  
San Rafael, CA  
Austin Sloat

### Caves:

Glen Ragsdale Underground  
Angwin, CA  
Glen Ragsdale

### CAD system, project management, or other software used

PowerCADD 2000 www.engsw.com

## the Products

### Exterior Cladding

**Exposed Steel Framing:**  
Iron Dog Fabricators (Office Building)

### Metal/Glass Curtainwall:

Store Front System - Arcadia (Office Building), Vistawall (Winery)

### Concrete:

Cast-in-place concrete - A&D Concrete

### Wood Screens:

Western Red Cedar (Office Building)

### Roofing

#### Membrane Roofing:

Siplast

#### Sod Roof:

Hydrotech

### Doors

#### Custom Metal Doors:

Kytin Fabrication and Design

#### Wood Doors:

Northstar Woodworks

### Interior Finishes

#### Cabinetwork and Custom Woodwork:

Walnut - Cello & Maudru, Mueller Nicholls

#### Lighting:

Interior ambient lighting

#### Custom sconces and chandeliers:

McEwen Lighting Studio

#### Conveyance Elevators:

ThyssenKrup

### Other

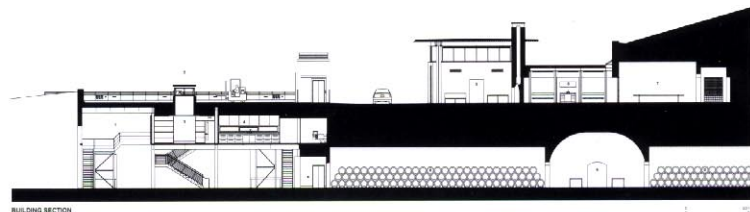
#### Catwalks:

Wolff's Welding & Fabrication

The environmentally conscious design assists with heating and cooling the winery. Irrigated sod roofs, thermal mass, and the use of night air ventilation preclude the need for mechanical refrigeration in the bottling and wine case storage areas. The design of the detached office and reception building utilizes large roof overhangs and exterior wood screens to shield the structure from the hot summer sun.



PHOTOGRAPHY: LESLIE DOWD & KEVIN KILLEN



BUILDING SECTION

1. RECEPTION ROOM
2. OFFICE
3. OFFICE
4. OFFICE
5. OFFICE
6. OFFICE
7. OFFICE
8. OFFICE
9. OFFICE
10. OFFICE